



Larry Harker's  
AUTO REPAIR

3845 W. Indian School Road  
Phoenix, AZ 85019  
602-278-5558  
www.lharepair.com

## IIHS ADDS A NEW SAFETY TEST TO PROTECT PASSENGERS



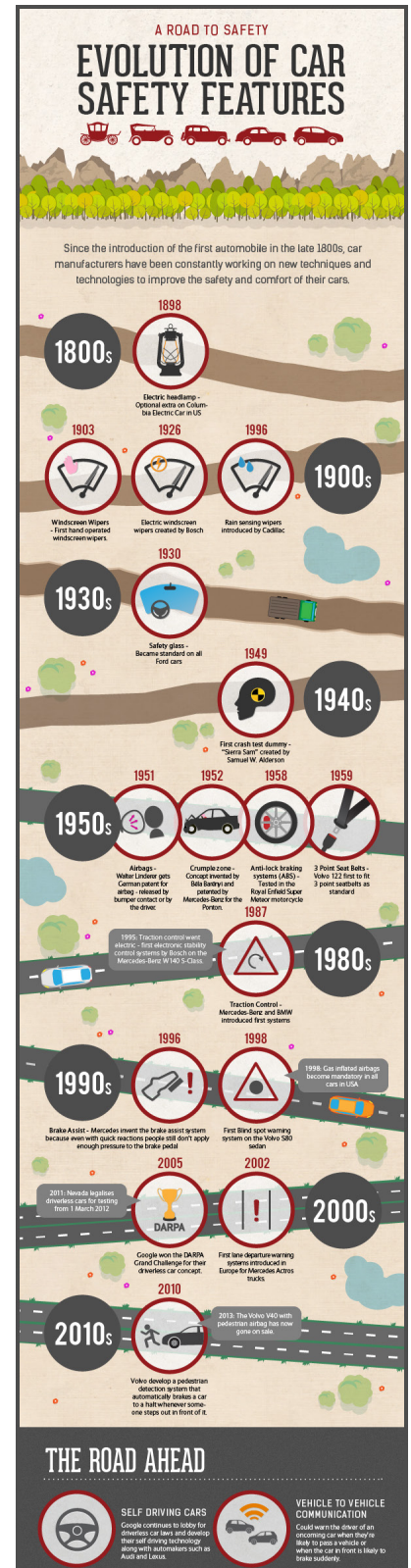
The Insurance Institute for Highway Safety, or IIHS, exists to reduce fatalities and property damage that results from motor vehicle accidents. This organization is an independent non-profit that was founded in 1959. Today, this highly esteemed group awards yearly "Top Safety Pick" rankings to vehicles that perform well in all tests. We owe a lot to IIHS for holding automobile manufacturers to a higher standard, and helping to keep us safe on the road!

Since 2012, IIHS has conducted a test on vehicles that simulates what would happen if the driver side of the vehicle struck a wall at 40mph. The test is designed to show what happens to the driver if the vehicle is involved in a collision at an angle. This test is called the driver-side small overlap frontal test, and has resulted in many vehicle manufacturers stepping up their driver's side safety by improving vehicle structure and airbag function.

Unfortunately, there has been a noticeable oversight in recent years; manufacturers have been improving driver-side safety specifically to score higher ratings in these tests, and have neglected to also strengthen the passenger side under similar accident conditions. As a result, IIHS is introducing a new test for its 2017 rankings. The passenger-side small overlap frontal test will hold automakers to the same standards as the driver's side test, except on the opposite side of the vehicle. Also, instead of just one dummy in the vehicle, there are both driver and passenger test dummies present.

Realistically, this new test makes perfect sense – passengers should be protected just as well as the driver in case of accident. Although preliminary reports don't show any major structural concerns on the vehicles tested, they do show that passenger-side airbags as well as safety belts need to be optimized for better head protection for passengers. For example, of the 9 vehicles that were part of a set of initial tests, only two earned a rating of "Good" – four received "Acceptable," two were "Marginal," and one was "Poor."

It's great that IIHS is taking steps to keep both drivers and passengers safe and sound while continuing to develop better tests to raise the standards of our manufacturers.



## WHAT OTHERS SAY: READ OUR REVIEWS!

**Mike W.**  
9/16/17



Listen to you and talk to you. They have obvious integrity and really care about your vehicle and your needs. I'm glad I found them!

**Beverly T.**  
8/2/17



Always take my vehicle there everybody is helpful and kind

**Aaron C.**  
7/31/17



The people were up front and honest right at the beginning of our visit. All the employees were very friendly and helpful. I would definitely suggest them to my friends and family.

**Fred B.**  
7/31/17



I have the utmost confidence in the services and repairs provided at Larry Harker's Auto Repair. The workmanship and quality done on both of my cars are excellent. Bob and Ellen do a great job of communicating to me not only the costs, but immediate repairs versus future repairs in order to keep my cars running in great condition.

### READ ALL REVIEWS AT:

[www.garagefly.com/shop/Larry-Harkers-Auto-Repair-Phoenix](http://www.garagefly.com/shop/Larry-Harkers-Auto-Repair-Phoenix)

## OUR HOLIDAY PROMOTION



**STARBUCKS®**  
and  
 **garagefly.com**

**HAVE A DRINK ON US!**  
Book an appointment or post a review on GarageFly.com and receive a **\$5 e-gift card** to Starbucks!

Offer valid November 1 - December 31, 2017

One gift card per customer.  
Offer valid November 1 - December 31 2017.  
Customer must input their email address by January 15 to receive an e-gift card.

## CONTACT US

**Larry Harker's Auto Repair**  
3845 W. Indian School Road  
Phoenix, AZ 85019

**602-278-5558**  
[ellen@lharepair.com](mailto:ellen@lharepair.com)  
[www.lharepair.com](http://www.lharepair.com)

### READ LOCAL AND VALIDATED REVIEWS AT:

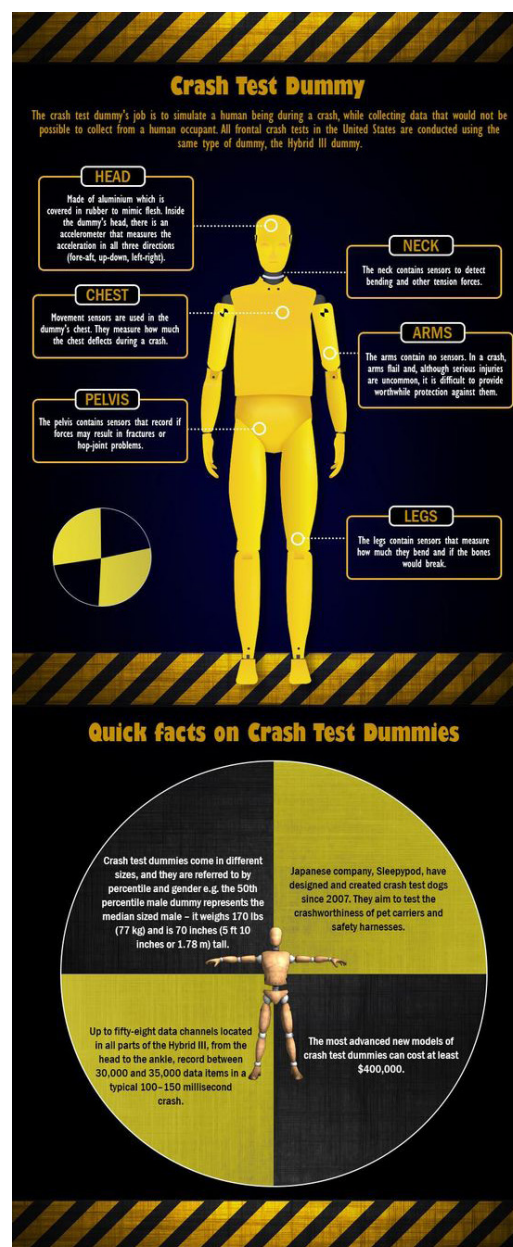
[www.garagefly.com/shop/Larry-Harkers-Auto-Repair-Phoenix](http://www.garagefly.com/shop/Larry-Harkers-Auto-Repair-Phoenix)

## WHO IS GARAGEFLY?



**garagefly.com**  
your trusted automotive resource®

GarageFly.com is an Arizona-based, comprehensive online resource that delivers automotive peace of mind to consumers. Drivers seeking information about reputable auto repair shops and auto body shops can read validated reviews for shops throughout the area, and quickly book an appointment online. GarageFly empowers consumers with information from reviews so they feel confident in their choice. To find out about our latest promotions, please visit us online at [www.GarageFly.com](http://www.GarageFly.com)!



**Crash Test Dummy**

The crash test dummy's job is to simulate a human being during a crash, while collecting data that would not be possible to collect from a human occupant. All frontal crash tests in the United States are conducted using the same type of dummy, the Hybrid III dummy.

**HEAD**  
Made of aluminum which is covered in rubber to mimic flesh. Inside the dummy's head, there is an accelerometer that measures the acceleration in all three directions (fore-aft, up-down, left-right).

**NECK**  
The neck contains sensors to detect bending and other tension forces.

**CHEST**  
Movement sensors are used in the dummy's chest. They measure how much the chest deforms during a crash.

**ARMS**  
The arms contain no sensors. In a crash, arms fail and, although serious injuries are uncommon, it is difficult to provide worthwhile protection against them.

**PELVIS**  
The pelvis contains sensors that record if forces may result in fractures or hip-joint problems.

**LEGS**  
The legs contain sensors that measure how much they bend and if the bones would break.

**Quick facts on Crash Test Dummies**

Crash test dummies come in different sizes, and they are referred to by percentile and gender e.g. the 50th percentile male dummy represents the median sized male - it weighs 170 lbs (77 kg) and is 70 inches (5 ft 10 inches or 1.78 m) tall.

Japanese company, Sleepypod, have designed and created crash test dogs since 2007. They aim to test the crashworthiness of pet carriers and safety harnesses.

Up to fifty-eight data channels located in all parts of the Hybrid III, from the head to the ankle, record between 30,000 and 35,000 data items in a typical 100-150 millisecond crash.

The most advanced new models of crash test dummies can cost at least \$400,000.